

Repair Instructions

Thermostat Replacement

Comfortzone Infrared Heater
Model CZ - 1500 WT / WC
Wood Cabinet

Note: Service procedures should be performed by a trained service technician familiar with the risks and precautionary steps required to prevent injury and to assure proper operating function of the unit if repairs are attempted.

Thermostat Replacement Sequence:

Warning: Unplug the unit from the wall receptacle

1. Place the unit on a table at a comfortable working level, with soft cloth underneath.
2. Remove the two retaining screws on the bottom of the chassis, as shown.
3. Slide the chassis out of the wood cabinet.
4. Note the position of the CPU on the back of the control panel.
5. Remove the CPU by prying on one edge until you can obtain a hold on it to complete the removal from the circuit board socket.
6. Replace the CPU with the new one, making sure that the lettering on the CPU is upside-down as it was on the one you removed. This is the method used to ensure that the CPU is not installed backwards. **Remember**, the CPU is installed with the lettering upside-down. **If you find it difficult to press the terminals into the socket you may bend the prongs on the CPU carefully inwards until both the top and bottom prongs fit smoothly into the socket. Press the CPU firmly all the way into the socket.** This completes the installation of the CPU for the thermostat.
7. **The CPU will not operate properly unless the fiberboard insulator is installed behind the control panel circuit board. Installation of the fiberboard insulator is critical to the sensitivity of the new thermostat CPU. Remove the two bottom screws that hold the control panel circuit board to the chassis. Without removing the screws or the insulators, you can slip the new fiberboard insulator, folded as shown, behind the control panel. There are two screw openings in the fiberboard insulator that will line-up with the mounting holes in the chassis. Re-tighten the two bottom screws to complete installation of the fiberboard insulator.**
8. Install the chassis back into the cabinet in reverse order of removal.



1

2



3



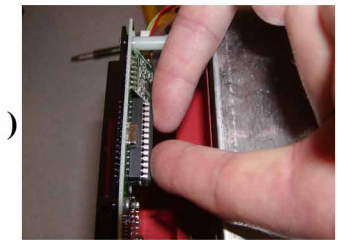
4



5



6 (a)



6 (b)

7 (c)



7 (b)



7 (a)

